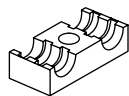
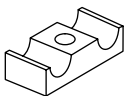


双联结构系列管夹订货标记

AD=聚丙烯 MD=聚酰胺 RD=橡胶



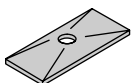
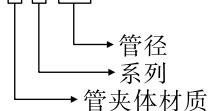
常规型
内有槽



H型
内侧光滑

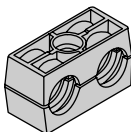
注：订H型管夹时，加后缀-H。

普通型组合：***-ADPS



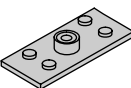
供货范围：

- 1x底板
- 1x管夹体（2半）
- 1x盖板
- 2x外六方螺栓

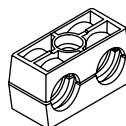
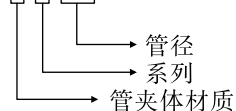


订货示例：

1系列管径6.4mm，管夹体材料为聚丙烯，整套订货号为：AD_{6.4}-ADPS

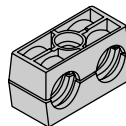


叠加型组合：***-ADVTEA



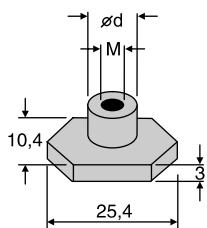
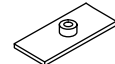
供货范围：

- 1x管夹体（2半）
- 1x保险片
- 2x长头螺栓



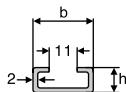
订货示例：

1系列管径6.4mm，管夹体材料为聚丙烯，整套订货号为：AD_{6.4}-ADVTEA



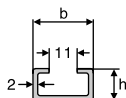
螺母订货号

- ADES-M6(1系列)
- ADES-M8(2-5系列)

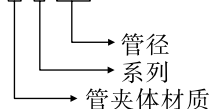


导轨订货号

- ABINS-11(厚度11mm)
- ABINS-14(厚度14mm)

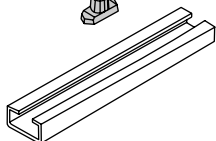
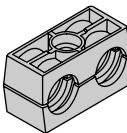
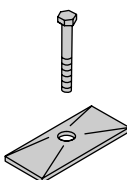


配合导轨型组合：ADES-***-ADPS



供货范围：

- 2x支承轨螺母
- 1x管夹体（2半）
- 1x盖板
- 2x外六方螺栓



订货示例：

1系列管径6.4mm，管夹体材料为聚丙烯，整套订货号为：ADES-AD_{6.4}-ADPS