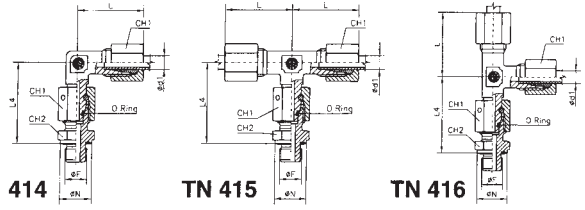
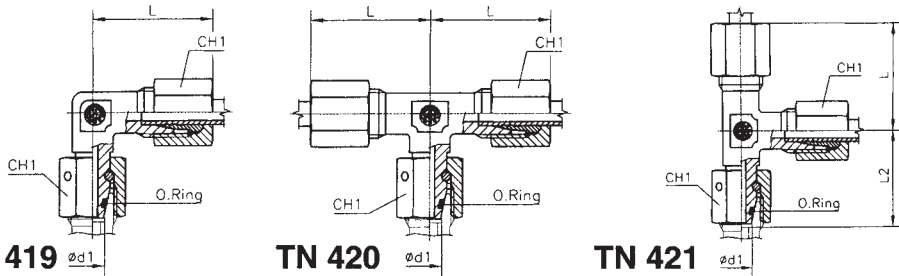


SWIVEL FITTINGS
可调向接头



| 系列 | Ø钢管 外径 d1 | 公称 压力 PN | L3 | L | L2 | L4 | CH1 | BSP螺纹 | | | 公制螺纹 | | | 可调向直角 (无带接头体) | | 可调向T型三通(带活螺母)-TN415 | | 可调向L型三通(带活螺母)-TN416 | |
|-----|-----------------|----------------|----|------|------|----|-----|-------|-------|-----|--------|----------------|----------------|----------------|----------------|---------------------|----------------|---------------------|------------|
| | | | | | | | | Ø N | CH2 | Ø F | Ø N | CH2 | Ø F | Ø F BSP | Ø F Metric | Ø F BSP | Ø F Metric | Ø F BSP | Ø F Metric |
| 轻系列 | 6 | 34,5 | 27 | 26 | 34,5 | 14 | 14 | 14 | 14 | 14 | 10x1 | TN 414 - 6 LR | TN 414 - 6 LM | TN 415 - 6 LR | TN 415 - 6 LM | TN 416 - 6 LR | TN 416 - 6 LM | | |
| | 8 | 37,5 | 29 | 27,5 | 37,5 | 18 | 19 | 1/4 | 17 | 17 | 12x1,5 | TN 414 - 8 LR | TN 414 - 8 LM | TN 415 - 8 LR | TN 415 - 8 LM | TN 416 - 8 LR | TN 416 - 8 LM | | |
| | 10 | 40 | 30 | 29 | 40 | 18 | 19 | 1/4 | 19 | 19 | 14x1,5 | TN 414 - 10 LR | TN 414 - 10 LM | TN 415 - 10 LR | TN 415 - 10 LM | TN 416 - 10 LR | TN 416 - 10 LM | | |
| | 12 | 42 | 32 | 29,5 | 42 | 22 | 22 | 3/8 | 21 | 22 | 16x1,5 | TN 414 - 12 LR | TN 414 - 12 LM | TN 415 - 12 LR | TN 415 - 12 LM | TN 416 - 12 LR | TN 416 - 12 LM | | |
| | 15 | 46,5 | 36 | 32,5 | 46 | 26 | 27 | 1/2 | 23 | 24 | 18x1,5 | TN 414 - 15 LR | TN 414 - 15 LM | TN 415 - 15 LR | TN 415 - 15 LM | TN 416 - 15 LR | TN 416 - 15 LM | | |
| | 18 | 50 | 40 | 35,5 | 50 | 26 | 27 | 1/2 | 27 | 27 | 22x1,5 | TN 414 - 18 LR | TN 414 - 18 LM | TN 415 - 18 LR | TN 415 - 18 LM | TN 416 - 18 LR | TN 416 - 18 LM | | |
| | 22 | 55 | 44 | 38,5 | 53 | 36 | 32 | 3/4 | 31 | 32 | 26x1,5 | TN 414 - 22 LR | TN 414 - 22 LM | TN 415 - 22 LR | TN 415 - 22 LM | TN 416 - 22 LR | TN 416 - 22 LM | | |
| | 28 | 59 | 47 | 41,5 | 59 | 41 | 39 | 1" | 39 | 41 | 33x2 | TN 414 - 28 LR | TN 414 - 28 LM | TN 415 - 28 LR | TN 415 - 28 LM | TN 416 - 28 LR | TN 416 - 28 LM | | |
| | 35 | 68,5 | 56 | 51 | 68,5 | 50 | 49 | 50 | 1"1/4 | 49 | 50 | 42x2 | TN 414 - 35 LR | TN 414 - 35 LM | TN 415 - 35 LR | TN 415 - 35 LM | TN 416 - 35 LR | TN 416 - 35 LM | |
| | 42 | 79 | 63 | 60 | 75 | 60 | 55 | 55 | 1"1/2 | 55 | 55 | 48x2 | TN 414 - 42 LR | TN 414 - 42 LM | TN 415 - 42 LR | TN 415 - 42 LM | TN 416 - 42 LR | TN 416 - 42 LM | |
| 重系列 | 6 | 40 | 31 | 27 | 40 | 18 | 19 | 1/4 | 17 | 17 | 12x1,5 | TN 414 - 6 SR | TN 414 - 6 SM | TN 415 - 6 SR | TN 415 - 6 SM | TN 416 - 6 SR | TN 416 - 6 SM | | |
| | 8 | 42,5 | 32 | 27,5 | 42,5 | 18 | 19 | 1/4 | 19 | 19 | 14x1,5 | TN 414 - 8 SR | TN 414 - 8 SM | TN 415 - 8 SR | TN 415 - 8 SM | TN 416 - 8 SR | TN 416 - 8 SM | | |
| | 10 | 45 | 34 | 30 | 45 | 22 | 22 | 3/8 | 21 | 22 | 16x1,5 | TN 414 - 10 SR | TN 414 - 10 SM | TN 415 - 10 SR | TN 415 - 10 SM | TN 416 - 10 SR | TN 416 - 10 SM | | |
| | 12 | 48 | 38 | 31 | 48 | 24 | 22 | 3/8 | 23 | 24 | 18x1,5 | TN 414 - 12 SR | TN 414 - 12 SM | TN 415 - 12 SR | TN 415 - 12 SM | TN 416 - 12 SR | TN 416 - 12 SM | | |
| | 14 | 54 | 40 | 35 | 54 | 27 | 26 | 1/2 | 25 | 27 | 20x1,5 | TN 414 - 14 SR | TN 414 - 14 SM | TN 415 - 14 SR | TN 415 - 14 SM | TN 416 - 14 SR | TN 416 - 14 SM | | |
| | 16 | 55 | 43 | 36,5 | 55 | 30 | 26 | 1/2 | 27 | 27 | 22x1,5 | TN 414 - 16 SR | TN 414 - 16 SM | TN 415 - 16 SR | TN 415 - 16 SM | TN 416 - 16 SR | TN 416 - 16 SM | | |
| | 20 | 65 | 48 | 44,5 | 65 | 36 | 32 | 3/4 | 32 | 32 | 27x2 | TN 414 - 20 SR | TN 414 - 20 SM | TN 415 - 20 SR | TN 415 - 20 SM | TN 416 - 20 SR | TN 416 - 20 SM | | |
| | 25 | 73 | 54 | 50 | 73 | 46 | 39 | 1" | 39 | 41 | 33x2 | TN 414 - 25 SR | TN 414 - 25 SM | TN 415 - 25 SR | TN 415 - 25 SM | TN 416 - 25 SR | TN 416 - 25 SM | | |
| | 30 | 78,5 | 62 | 55 | 78,5 | 50 | 49 | 50 | 1"1/4 | 49 | 50 | 42x2 | TN 414 - 30 SR | TN 414 - 30 SM | TN 415 - 30 SR | TN 415 - 30 SM | TN 416 - 30 SR | TN 416 - 30 SM | |
| | 38 | 90,5 | 72 | 64,5 | 89 | 60 | 55 | 55 | 1"1/2 | 55 | 55 | 48x2 | TN 414 - 38 SR | TN 414 - 38 SM | TN 415 - 38 SR | TN 415 - 38 SM | TN 416 - 38 SR | TN 416 - 38 SM | |

SWIVEL FITTINGS
可调向接头



| 系列 | Ø钢管 外径 d1 | 公称 压力 PN | L3 | L | L2 | L4 | CH1 | BSP螺纹 | | | 公制螺纹 | | | 活螺母可调式接头 (不带接头体) | | |
|-----|-----------------|----------------|----|------|------|----|-----|-------|-------|-----|--------|---------------|---------------|------------------|---------------|--------|
| | | | | | | | | Ø N | CH2 | Ø F | Ø N | CH2 | Ø F | TN 419 | TN 420 | TN 421 |
| 轻系列 | 6 | 34,5 | 27 | 26 | 34,5 | 14 | 14 | 14 | 14 | 14 | 10x1 | TN 419 - 6 L | TN 420 - 6 L | TN 421 - 6 L | | |
| | 8 | 37,5 | 29 | 27,5 | 37,5 | 18 | 19 | 1/4 | 17 | 17 | 12x1,5 | TN 419 - 8 L | TN 420 - 8 L | TN 421 - 8 L | | |
| | 10 | 40 | 30 | 29 | 40 | 18 | 19 | 1/4 | 19 | 19 | 14x1,5 | TN 419 - 10 L | TN 420 - 10 L | TN 421 - 10 L | | |
| | 12 | 42 | 32 | 29,5 | 42 | 22 | 22 | 3/8 | 21 | 22 | 16x1,5 | TN 419 - 12 L | TN 420 - 12 L | TN 421 - 12 L | | |
| | 15 | 46,5 | 36 | 32,5 | 46 | 26 | 27 | 1/2 | 23 | 24 | 18x1,5 | TN 419 - 15 L | TN 420 - 15 L | TN 421 - 15 L | | |
| | 18 | 50 | 40 | 35,5 | 50 | 26 | 27 | 1/2 | 27 | 27 | 22x1,5 | TN 419 - 18 L | TN 420 - 18 L | TN 421 - 18 L | | |
| | 22 | 55 | 44 | 38,5 | 53 | 36 | 32 | 3/4 | 31 | 32 | 26x1,5 | TN 419 - 22 L | TN 420 - 22 L | TN 421 - 22 L | | |
| | 28 | 59 | 47 | 41,5 | 59 | 41 | 39 | 1" | 39 | 41 | 33x2 | TN 419 - 28 L | TN 420 - 28 L | TN 421 - 28 L | | |
| | 35 | 68,5 | 56 | 51 | 68,5 | 50 | 49 | 50 | 1"1/4 | 49 | 50 | 42x2 | TN 419 - 35 L | TN 420 - 35 L | TN 421 - 35 L | |
| | 42 | 79 | 63 | 60 | 75 | 60 | 55 | 55 | 1"1/2 | 55 | 55 | 48x2 | TN 419 - 42 L | TN 420 - 42 L | TN 421 - 42 L | |
| 重系列 | 6 | 40 | 31 | 27 | 40 | 18 | 19 | 1/4 | 17 | 17 | 12x1,5 | TN 419 - 6 S | TN 420 - 6 S | TN 421 - 6 S | | |
| | 8 | 42,5 | 32 | 27,5 | 42,5 | 18 | 19 | 1/4 | 19 | 19 | 14x1,5 | TN 419 - 8 S | TN 420 - 8 S | TN 421 - 8 S | | |
| | 10 | 45 | 34 | 30 | 45 | 22 | 22 | 3/8 | 21 | 22 | 16x1,5 | TN 419 - 10 S | TN 420 - 10 S | TN 421 - 10 S | | |
| | 12 | 48 | 38 | 31 | 48 | 24 | 22 | 3/8 | 23 | 24 | 18x1,5 | TN 419 - 12 S | TN 420 - 12 S | TN 421 - 12 S | | |
| | 14 | 54 | 40 | 35 | 54 | 27 | 26 | 1/2 | 25 | 27 | 20x1,5 | TN 419 - 14 S | TN 420 - 14 S | TN 421 - 14 S | | |
| | 16 | 55 | 43 | 36,5 | 55 | 30 | 26 | 1/2 | 27 | 27 | 22x1,5 | TN 419 - 16 S | TN 420 - 16 S | TN 421 - 16 S | | |
| | 20 | 65 | 48 | 44,5 | 65 | 36 | 32 | 3/4 | 32 | 32 | 27x2 | TN 419 - 20 S | TN 420 - 20 S | TN 421 - 20 S | | |
| | 25 | 73 | 54 | 50 | 73 | 46 | 39 | 1" | 39 | 41 | 33x2 | TN 419 - 25 S | TN 420 - 25 S | TN 421 - 25 S | | |
| | 30 | 78,5 | 62 | 55 | 78,5 | 50 | 49 | 50 | 1"1/4 | 49 | 50 | 42x2 | TN 419 - 30 S | TN 420 - 30 S | TN 421 - 30 S | |
| | 38 | 90,5 | 72 | 64,5 | 89 | 60 | 55 | 55 | 1"1/2 | 55 | 55 | 48x2 | TN 419 - 38 S | TN 420 - 38 S | TN 421 - 38 S | |