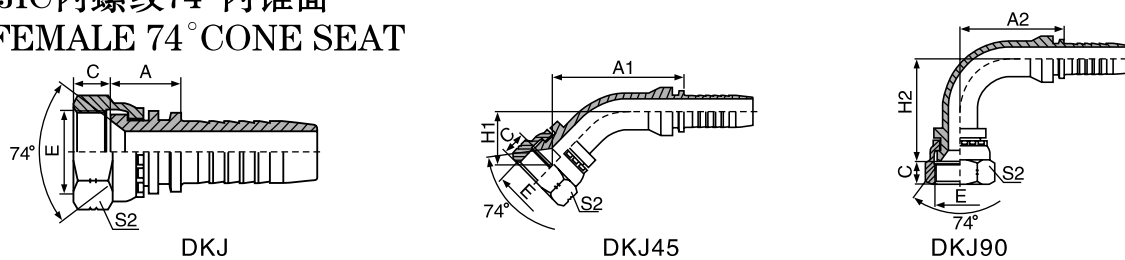
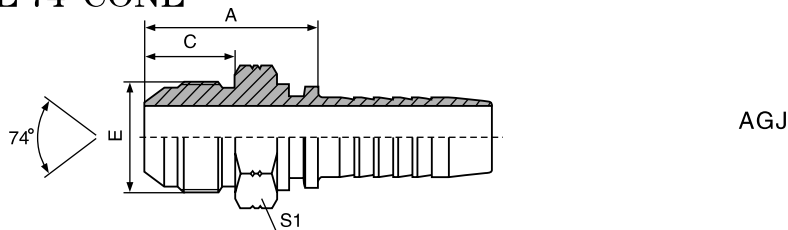


美制JIC内螺纹74°内锥面
JIC FEMALE 74° CONE SEAT



订货代号	螺纹E	软管		尺寸				
		通径DN	标号	A	C	S2	A1/H1	A2/H2
DKJ**-04-04	7/16" *20	6	-4	15	9	15	40.2/18.1	30/33.5
DKJ**-05-05	1/2" *20	8	-5	15.5	9.5	17	42.7/19.3	33/37
DKJ**-06-06	9/16" *18	10	-6	15.5	10.5	19	44.3/20	35.3/39.3
DKJ**-08-08	3/4" *16	12	-8	18	11	24	58.6/23.5	41/47
DKJ**-10-10	7/8" *14	16	-10	20	13	27	70.1/25.3	56.5/52.5
DKJ**-12-12	1-1/16" *12	20	-12	21.5	15	32	77.4/30	65.5/63.5
DKJ**-14-12	1-3/16" *12	20	-12	21.5	15	36	77.4/30	65.5/63.5
DKJ**-16-16	1-5/16" *12	25	-16	23	16	41	85.7/31.5	76.7/70
DKJ**-20-20	1-5/8" *12	32	-20	26	17	50	96.6/35.9	91.5/82.5
DKJ**-24-24	1-7/8" *12	40	-24	26.5	20	55	114.8/44.1	109.4/97.5
DKJ**-32-32	2-1/2" *12	50	-32	27	23.5	75	135.9/51.6	130.3/118.8

美制JIC外螺纹74°外锥面
JIC MALE 74° CONE



订货代号	螺纹E	软管		尺寸				
		通径DN	标号	A	C	S1		
AGJ**-04-04	7/16" *20	6	-4	26.5	14	12		
AGJ**-05-05	1/2" *20	8	-5	26.5	14	14		
AGJ**-06-06	9/16" *18	10	-6	26.5	14.1	17		
AGJ**-08-08	3/4" *16	12	-8	32	16.7	22		
AGJ**-10-10	7/8" *14	16	-10	35.5	19.3	24		
AGJ**-12-12	1-1/16" *12	20	-12	40	21.9	27		
AGJ**-14-12	1-3/16" *12	20	-12	40.6	22.6	32		
AGJ**-16-16	1-5/16" *12	25	-16	43.5	23.1	36		
AGJ**-20-20	1-5/8" *12	32	-20	47.5	24.3	46		
AGJ**-24-24	1-7/8" *12	40	-24	53	27.5	50		
AGJ**-32-32	2-1/2" *12	50	-32	62	33.9	65		